



Stem Cells, Cell Extracts/Peptides Exosomes - What Works Best

- Prof. Dr Mike Chan
Researcher

Who We are

1.
Owner of Unrivalled
Proprietary
Technology &
Biomolecular
Technologies

2.
Providers /
Manufacturers for all
kind of stemcells,
peptides, biological ,
regenerative therapies

3.
Proven
Formulations with
supported
publications

4.
Researchers &
developers

5.
Educator Academy
With
CBP
Authorisations

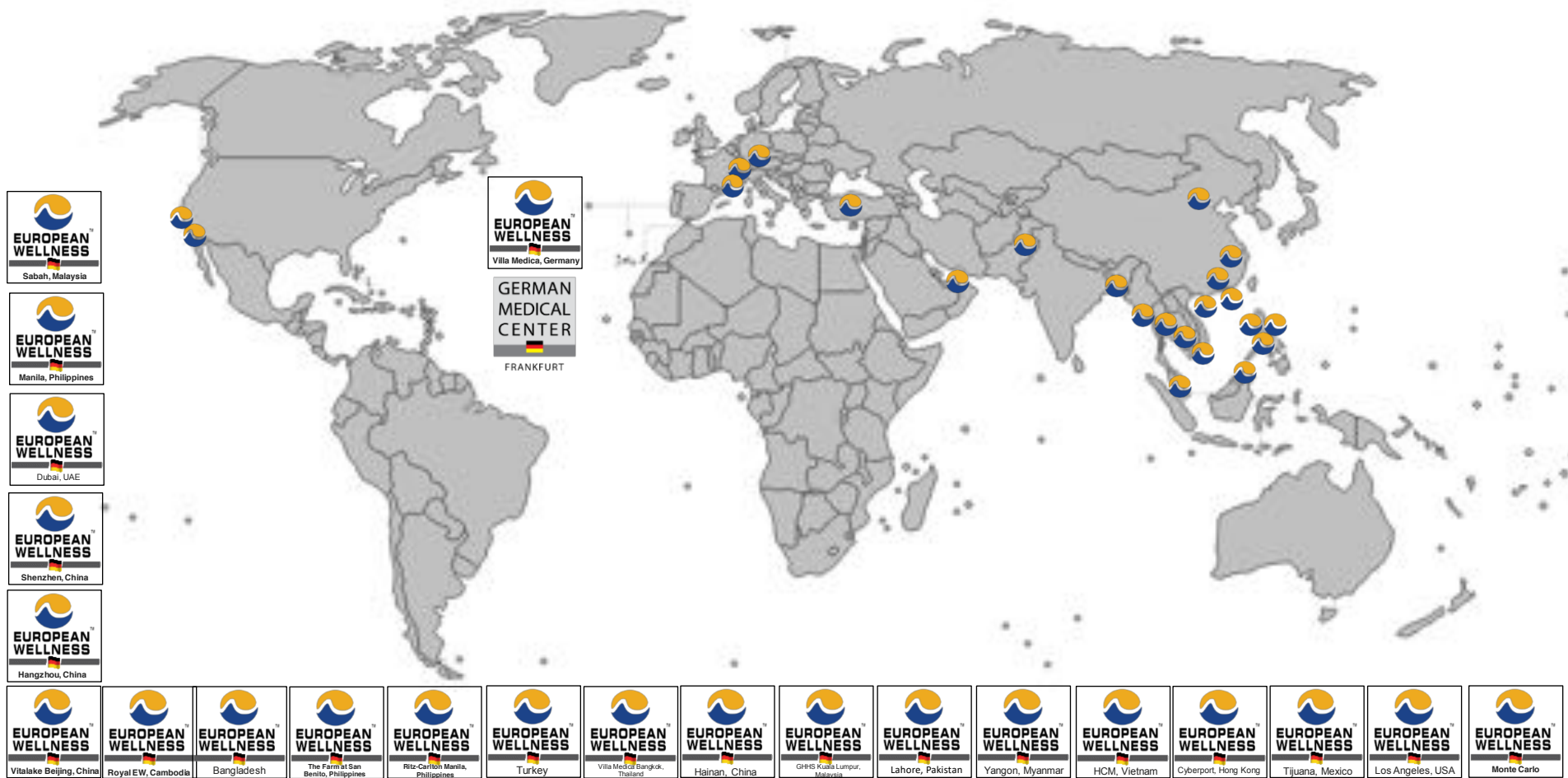
6.
Pioneer in Cellular
Therapy, Precursor
(Progenitor) Stem Cell
Research & Biological
for integrative Medicine
since 1985

7.
Owners of
European
Wellness
Regenerative
Hospitals and
Clinics

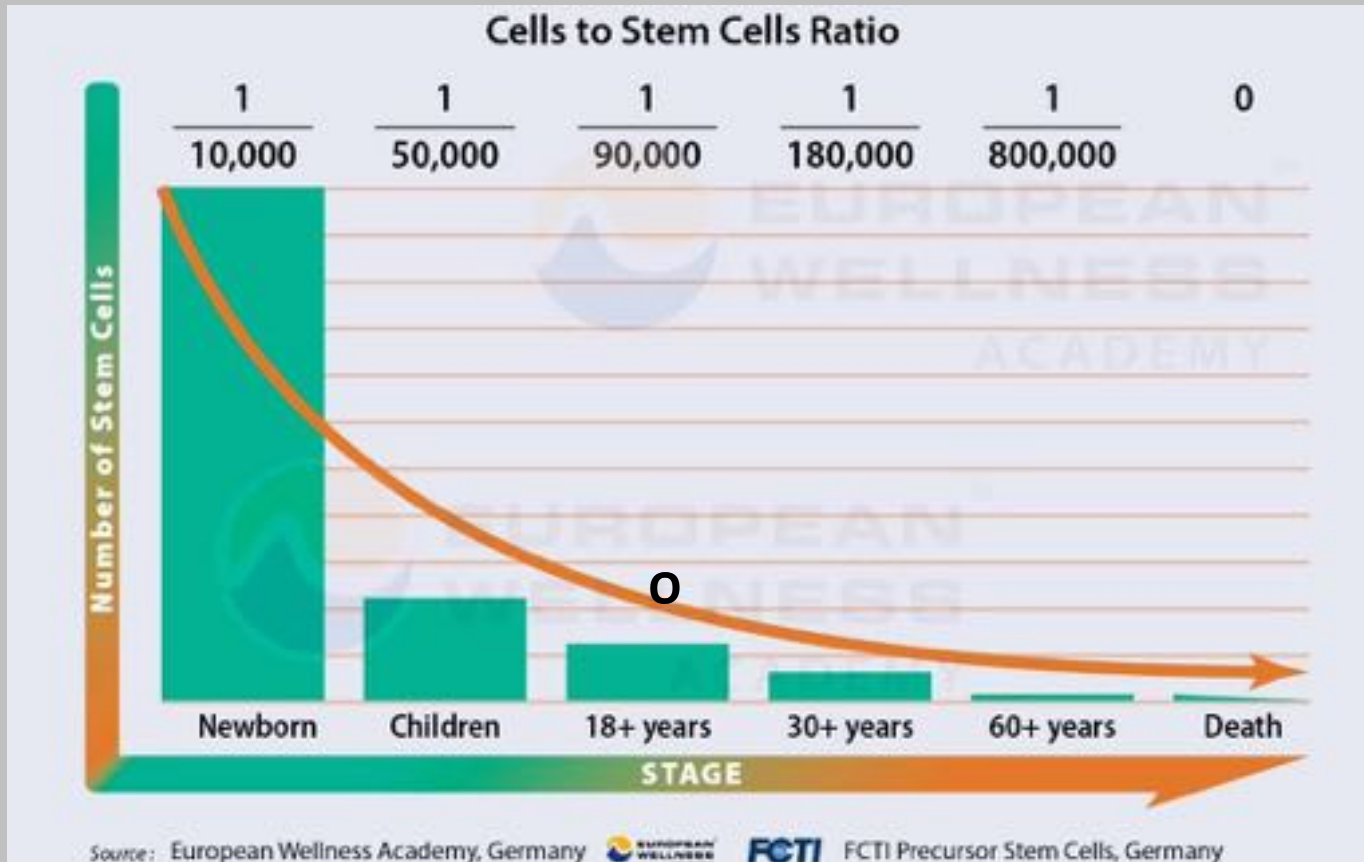
for educational purposes only



European Wellness Centres Worldwide

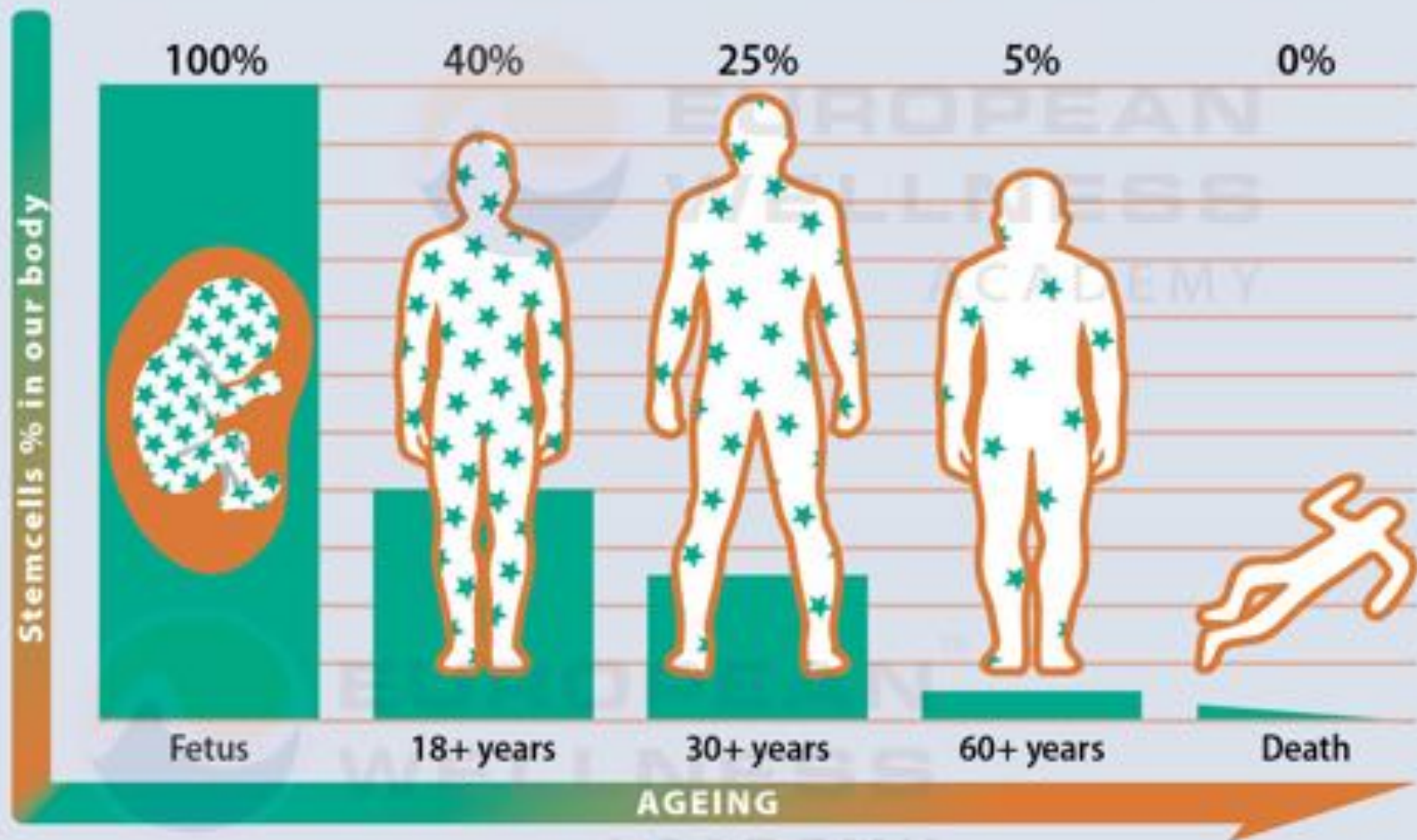


STEM CELLS IN HUMAN BODY

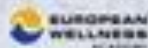


At younger age \approx 37.2 trillion cells in the human body, 744 million of active stem cells.
40 years old \approx 25 million active stem cells.

Your Stem Cells in your body decreases as you age



Source: European Wellness Academy, Germany



FCTI Precursor Stem Cells, Germany

COMMON TYPES OF STEM CELLS/ CELLS from the 473 cells found in human body

Umbilical Cord stem cells

UBC

Contains blood stemcells (mesenchymal stemcells(MSC) ,Haematopoietic (HMC)) , which may or may not produce cells found in blood, including cells of the immune system

Allogeneic/ Autologous stem cells

MSC

Mesenchymal stem cells (MSC) found here may or may not turn to ligaments, tendons but will not turn into neurons nor hepatocytes, cardiomyocytes etc

Induced pluripotent stem cells

IPSC

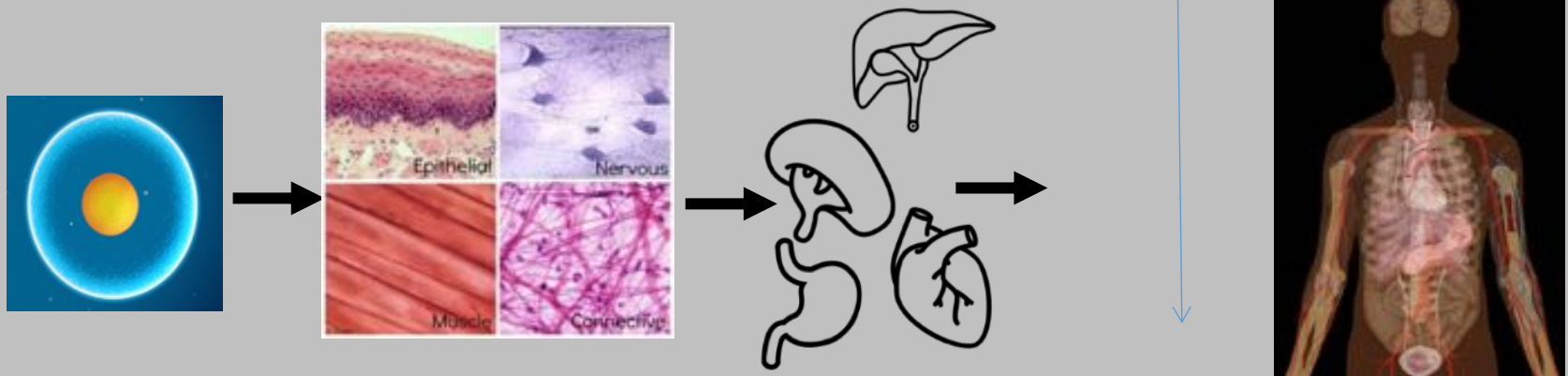
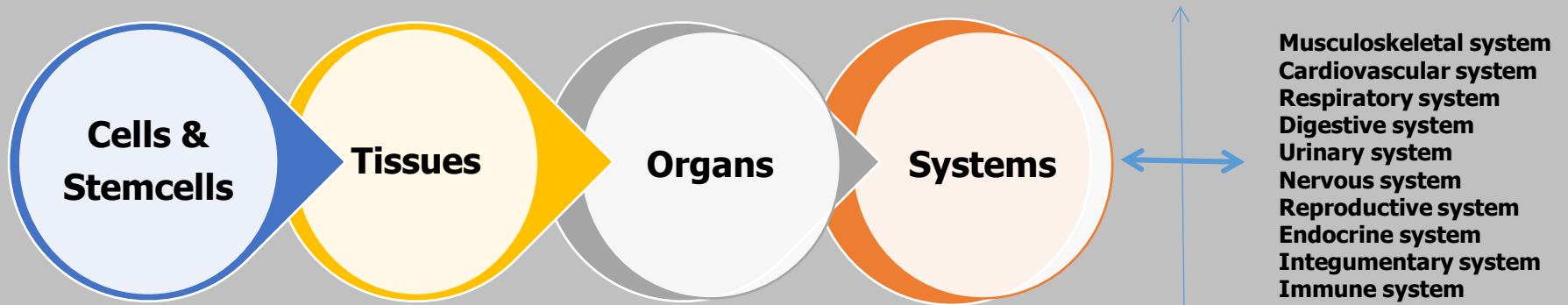
Induced pluripotent stem cells are a type of pluripotent stem cell that can be generated into progenitor stemcells in the near future

Progenitor stem cells/ Precursor stem cells



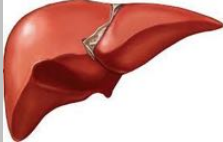





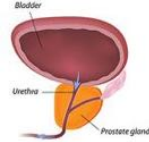



PSC

PSC has a tendency to differentiate only into a specific target type of cell only.eg hepatocytes, cardiomyocytes, lungs, ovary, peripheral muscle

Organization of the Human Body







Your body systems will start to go downhill when you age!

BRAIN Starts ageing at 20		LUNGS Start ageing at 20		LIVER Starts ageing at 70	
GUT Starts ageing at 55		VOICE Starts ageing at 65		KIDNEYS Starts ageing at 50	
BREASTS Start ageing at 35		EYES Start ageing at 40		PROSTATE Starts ageing at 50	
BLADDER Starts ageing at 65		HEART Starts ageing at 40		TASTE AND SMELL Start ageing at 60	

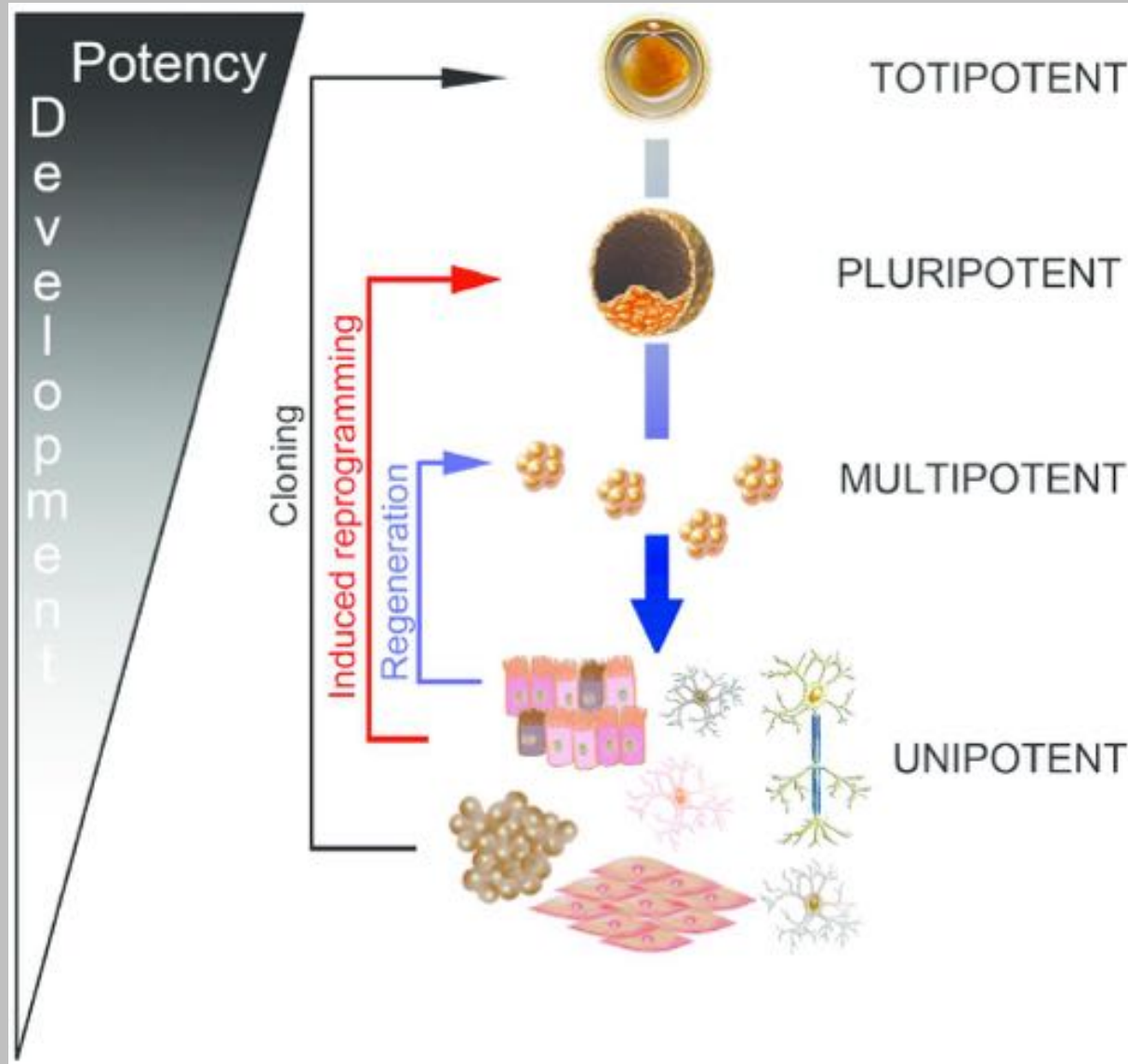
Info adopted from: <https://www.dailymail.co.uk/health/article-1035037/Old-time-When-body-really-starts-going-downhill.html>

Your body systems will start to go downhill when you age!

<p>TEETH Start ageing at 40</p>	
<p>MUSCLES Start ageing at 30</p>	
<p>HEARING Starts ageing mid-50s</p>	
<p>HAIR Starts ageing at 30</p>	

<p>SKIN Starts ageing mid-20s</p>	
<p>FERTILITY Starts ageing at 35</p>	
<p>BONES Start ageing at 35</p>	
<p>Arthritis Start occurs after age of 40</p>	

Characteristics of Stem Cells



ANIMAL-DERIVED THERAPIES FOR HUMAN INTAKE

Bovine

Product name	Generic name	Therapeutic class	Comment
Blackmores Immunodefence capsules		Immune supplement	
Calporo	Calporo	Herbal daily supplements	
Cartilag	Cartilag	Herbal analgesics and anti-inflammatories	
Ethical Nutrients Inner Health plus capsules	Lactobacillus acidophilus, Bovine colostrum	Digestive supplements	
Ethical nutrients inner health plus powder	Lactobacillus acidophilus, Bovine colostrum	Digestive supplements	
Gelofusine	Gelatin succinylated		
Haemaccol	Polygeline	Plasma volume expander	
Hypurin isophane (NPH) injection	Insulin, isophane	Insulin preparations	
Hypurin Neutral injection	Insulin, neutral	Insulin preparations	
Tisseel VH S/D Solution	Aprotinin - Factor XIII - Fibrinogen, Calcium chloride dihydrate - Thrombin	Haemostatic agent	
Travelan	Bovine colostrum	Anti-diarrhoeal	
Varivax	Varicella zoster vaccine, live	Vaccines	Inactive components include hydrolysed gelatin and traces of bovine serum.
Vivaxim	Hepatitis A vaccine, Salmonella typhi vaccine	Vaccines	Bovine serum albumin ~10 mg (inactive component)
Zyderm Collagen implants	Collagen	Other dermatological preparations	
Zyplast Collagen implants	Collagen	Other dermatological preparations	

Bovine – Manufacture includes exposure to bovine materials “Bovine-Indirect”

Product name	Generic name	Therapeutic class	Comment
Adacel	Pertussis vaccine, Diphtheria toxoid, Tetanus toxoid, Poliomylitis vaccine	Vaccine	
Avaxim	Hepatitis A vaccine	Vaccine	
Boostrix	Diphtheria toxoid, Tetanus toxoid, Pertussis vaccine	Vaccine	
Boostrix – IPV suspension for injection	Diphtheria toxoid, Tetanus toxoid, Pertussis vaccine, Poliomylitis vaccine	Vaccine	
Engerix-B Thiomersal free formulation suspension for injection	Hepatitis B vaccine	Vaccine	
Havrix 1440	Hepatitis A vaccine	Vaccine	
Havrix Junior	Hepatitis A vaccine	Vaccine	
Hibentix	Haemophilus B conjugate vaccine	Vaccine	
Merieux inactivated rabies vaccine	Rabies vaccine	Vaccines	
Prevenar	Pneumococcal vaccine	Vaccines	
Prionix	Measles, mumps & rubella vaccine	Vaccines	
Prionix-tetra	Varicella zoster vaccine, Rubella vaccine, Mumps vaccine, Measles vaccine	Vaccines	
Rabipur	Rabies vaccine	Vaccines	
Recombinate	Recombinant anti-haemophilic factor	Haemostatic agents	Derived from hamster ovary cells but has trace of bovine, mouse and hamster proteins
Varivax	Varicella zoster vaccine, live	Vaccines	Inactive components include hydrolysed gelatin and traces of bovine serum.
Fluarix	Influenza virus vaccine	Vaccine	
ADT Booster	Diphtheria toxoid	Vaccine	

Porcine

Product name	Generic name	Therapeutic class	Comment
Clexane	Enoxaparin	Anticoagulant, Antithrombotics	
Creon	Pancrelipase	Digestive supplements and cholelitholytics	
Creon Micro Enteric coated granules	Pancrelipase	Digestive supplements and cholelitholytics	
Curosurf	Poractant alfa	Respiratory agent	
Ethical Nutrients Digestion plus		Herbal gastrointestinal preparations	
Fragmin	Dalteparin	Anticoagulant	
Heparin sodium injection	Heparin sodium	Anticoagulant	
Heparinised saline	Heparin sodium	Anticoagulant	
Heparinised saline injection	Heparin sodium	Anticoagulant	
Orgaran	Danaparoid	Haemostatic agent	From animal mucosa (Porcine)
Panzytrat 25000	Amylase, Lipase, Pancrelipase, Protease	Digestive supplement	
Prothrombinex-VF	Antithrombin II, human, Factor II, V, VII, IX, X Heparin, porcine	Haemostatic agent	
Rotarix	Human rotavirus live attenuated vaccine	Vaccine	Contains porcine circovirus type 1 (PCV-1)
RotaTeq	Rotavirus vaccine live oral pentavalent	Vaccine	
Zostavax	Zoster virus vaccine live	Vaccine	

Equine (Horse)

Product name	Generic name	Therapeutic class	Comment
ATGAM	Antithymocyte globulin	Immunomodifier	
Black snake antivenom	Black snake antivenom	Antivenom	
Brown snake antivenom	Brown snake antivenom	Antivenom	
Death adder antivenom	Death adder antivenom	Antivenom	
Polyvalent snake antivenom	Brown snake antivenom, Death adder antivenom, King brown snake antivenom, Taipan antivenom, Tiger snake antivenom	Antivenom	
Premarin tablets	Oestrogens, Conjugated	Gonadal hormone	
Premarin for injection	Oestrogens, Conjugated	Haemostatic agent	
Premia	Medroxyprogesterone acetate	Gonadal hormone	
Red back spider antivenom	Red back spider antivenom	Antivenom	
Sea snake antivenom	Sea snake antivenom	Antivenom	
Stonefish antivenom	Stonefish antivenom	Antivenom	
Taipan antivenom	Taipan antivenom	Antivenom	
Tiger snake antivenom	Tiger snake antivenom	Antivenom	

Murine (mouse)

Product name	Generic name	Therapeutic class	Comment
Avastin	Bevacizumab	Antineoplastic agent	Humanised murine antibody
Erlbitux	Cetuximab	Antineoplastic agent	Produced in mammalian cell culture by mouse myeloma cells
Herceptin	Trastuzumab	Antineoplastic agent	Murine anti-p165 HER2 antibody
Mazthera	Rituximab	Antineoplastic agent	Genetically engineered chimeric murine/human monoclonal antibody
Remicade	Infliximab	Immunomodifier	Monoclonal antibody composed of human constant and murine variable regions
Reopro	Abciximab	Anticoagulant	
Saizen	Somatropin	Pituitary hormone	
Simponi prefilled syringe solution	Golimumab	Anti-rheumatoid agent	Murine hybridoma cell line with recombinant DNA technology
Simulect	Basiliximab	Immunomodifier	Murine/human chimeric monoclonal antibody
Synage	Palivizumab	Immunomodifier	5% murine amino acid sequences

Eggs

Product name	Generic name	Therapeutic use	Comment
Agrippal	Influenza virus vaccine	Vaccine	vaccine may contain: egg, chicken
Fluarix	Influenza virus vaccine	Vaccine	prepared using whole virus cultivated in embryonated hen eggs
Fluavax	Influenza virus vaccine	Vaccine	prepared from virus grown in the allantoic cavity of embryonated eggs
Intanza	Influenza virus vaccine	Vaccine	Propagated in fertilised hens' eggs
Panvax H1N1 Vaccine	H1N1 pandemic influenza vaccine	Vaccine	propagated in the allantoic fluid of embryonated chicken eggs
Q-Vax skin test	Coxsackie burnelli vaccine	Vaccine	
Rabipur	Rabies vaccine	Vaccine	Made from purified chick embryo cell
Vaxigrip	Influenza virus vaccine	Vaccine	prepared from virus grown in the allantoic cavity of embryonated eggs.
Influvac	Influenza virus vaccine	Vaccine	prepared from virus grown in the allantoic cavity of embryonated eggs

Chinese Hamster Ovary (CHO) cells

Product name	Generic name	Therapeutic class	Comment
Advate	Octocog alfa	Haemostatic agent	
Alidurzyme	Laronidase	Enzyme replacement therapy	
Aranesp	Darbepoetin	Haemopoietic agent	
Avastin	Bevacizumab	Antineoplastic	
Avonex	Interferon beta-1a	Immunomodifier	
Benefix	Noracog alfa	Haemostatic agent	
Cerezyme	Imiglucerase	Enzyme replacement therapy	
Elonva	Corifollitropin alfa	Pituitary hormones	
Entrel	Etanercept	Immunomodifier	

Others

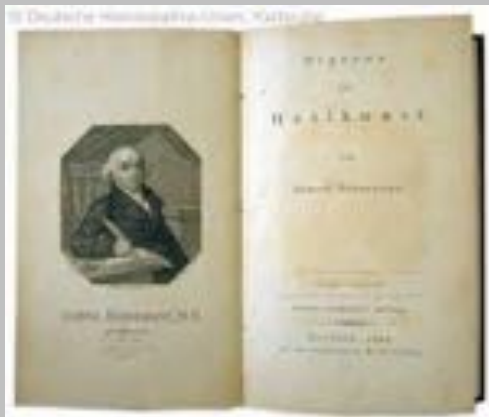
Product name	Generic name	Therapeutic uses	Comment
Chondroitin (Numerous brands)	Chondroitin	Complementary osteoarthritis	From bovine or shark cartilage
Digbind	Digoxin binding antibody	Antidote	From sheep
Glucosamine	Glucosamine	Complementary osteoarthritis	From shell fish
Humira	Adalimumab	Immunomodifier	Mammalian cells (Not specified)
Mono-plus mononucleosis test		Diagnostic	Guinea pig, horse
Novoseven	Eptacog alfa	Haemostatic	Baby hamster kidney (BHK) cells

Other complementary agents and/or excipients that may be of animal origin

Product	Source
Bee pollen	Gathered by bees and collected from legs of bees
Chitin	From insects and crustaceans
Chymotrypsin	Cochineal/Carmine/Carmine acid
Cochineal/carmine/carmine acid	Red pigment from crushed cochineal insects
Disodium inosinate	From meat extract
Gelatin	From coes or pigs. Used for many capsules
Glycerol	May be derived from animal fats
Lactose	From cows milk. Usually made synthetically (Common filler in tablets)
Lanolin	Fat extracted from sheep's wool
Oleic oil and oleostearin	From pressed tallow
Propolis	Bee glue
Shellac	Insect secretion
Stearic acid	Fat from cows, sheep, dogs or cats. Can be obtained from vegetable sources
Trypsin	Enzyme from pork pancreas

Source adapted from: Document Number # QH-GDL-954:2013 Medicines/pharmaceuticals of animal origin

Early
nineteenth
century with
the publication



Similia Similibus Curantur

“Organon der Heilkunst”

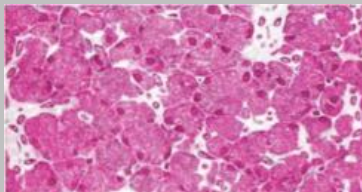
Like Cure Like

Organon of the art of healing

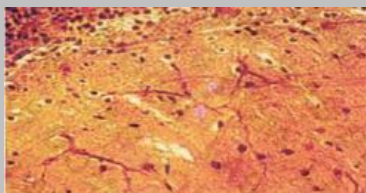
and is known as *the law of similars*

ATLAS OF COMPARATIVE HISTOLOGY OF VARIOUS STEM CELL TRANSPLANT

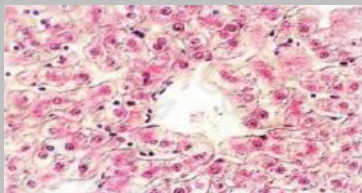
Animal



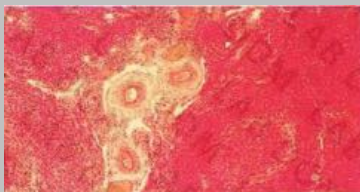
Pancreatic islets



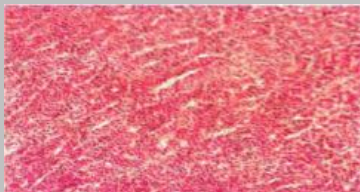
Cerebellum



Liver

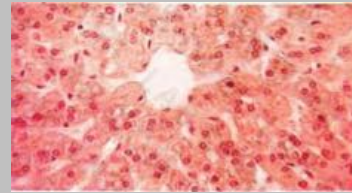
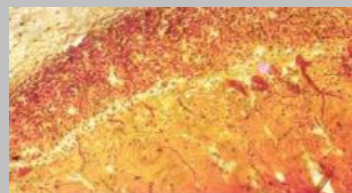
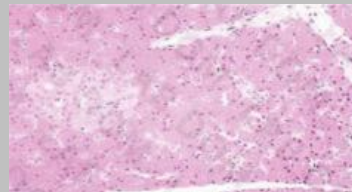


Ovary



Adrenal

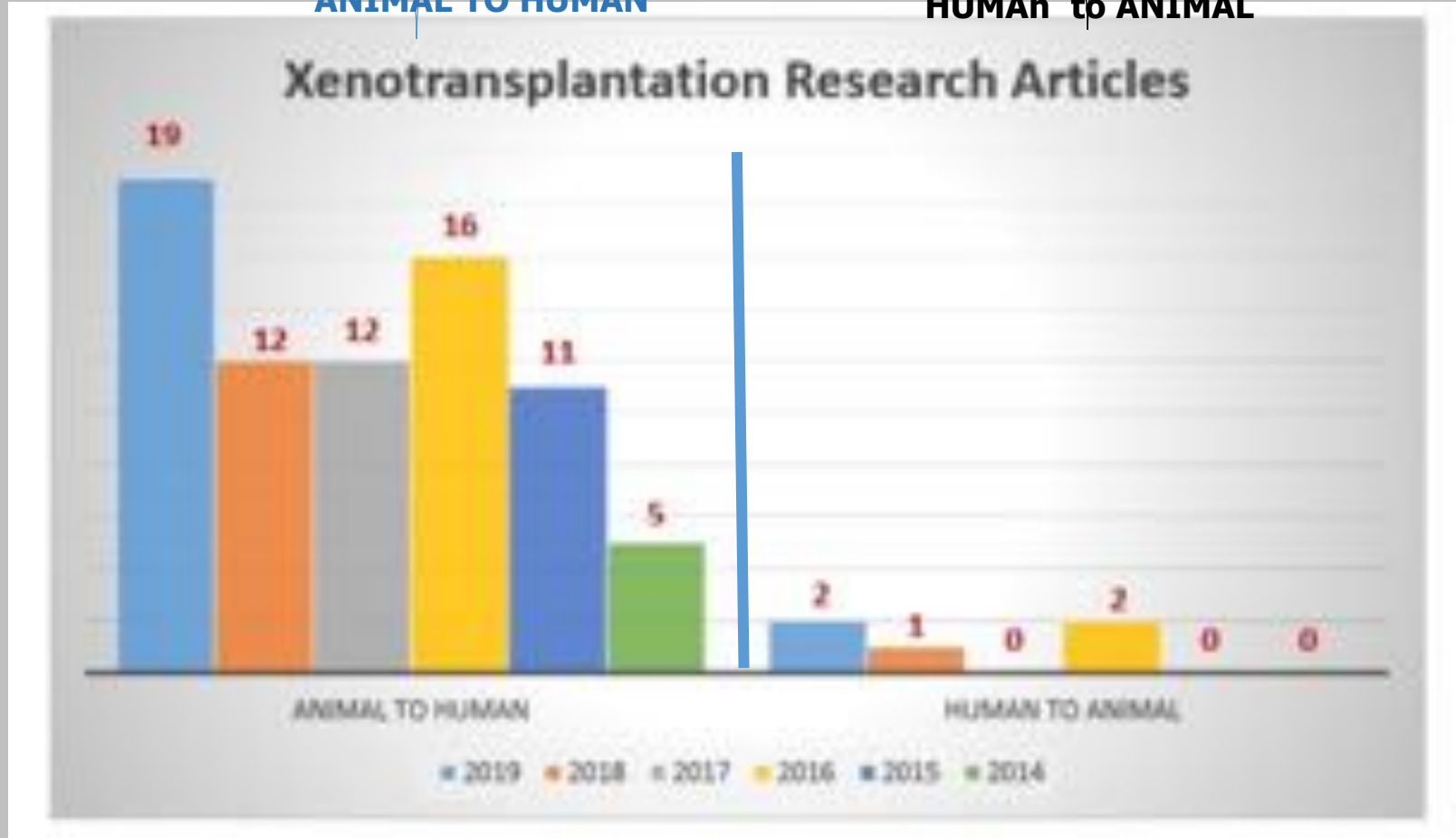
Human



Japan, one of the top countries in Mesenchymal Stemcells & iPSCs started Xeno celltransplantation officially in 2014

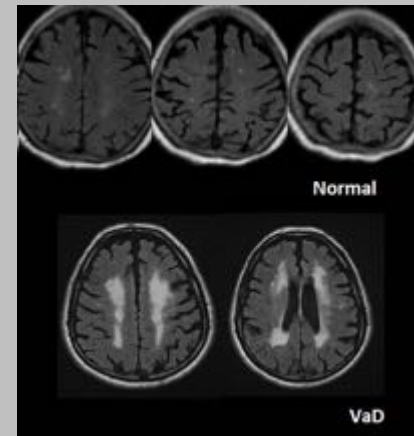
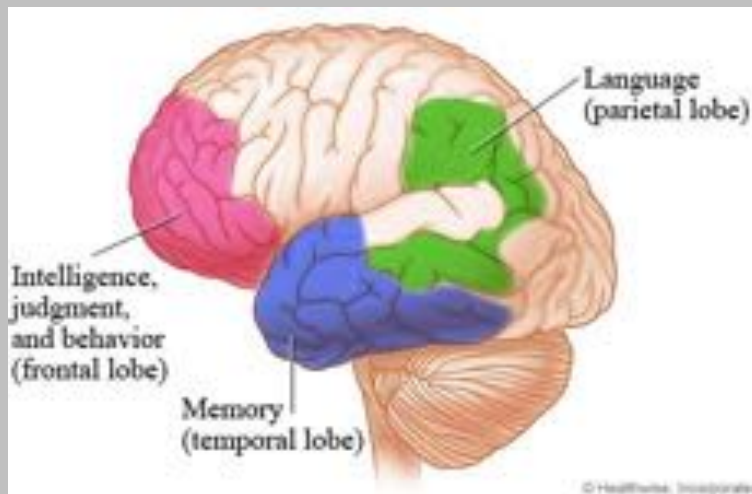
75 research articles
ANIMAL TO HUMAN

5 research articles
HUMAN to ANIMAL



'Promising' dementia drug made from pigs' brains could help 200,000 sufferers

- The new drug called cerebrolysin improves concentration, memory and mood among those suffering with vascular dementia
- The new drug is licensed in some countries but not in the UK or U.S.
- No serious side effects were reported from taking the drug



Liver Cells

No.	Cell Types
1.	Hepatocytes (parenchymal cells)
2.	Kupffer cells
3.	Hepatic stellate (Ito) cells
4.	Liver sinusoidal endothelial cells
5.	Biliary epithelial cells (cholangiocytes)
6.	Hepatic stromal cells
7.	Hepatic dendritic cells
8.	Liver resident macrophages
9.	Liver hematopoietic stem cells
10.	Natural killer (NK) cells in liver
11.	Lymphocytes (PIT cells)
12.	Hepatoblast
13.	Mesenchymal stem cells in liver
14.	Mesothelial cells in liver
15.	Lymphatics endothelial cells

16.	Regulatory T cells
17.	Liver myofibroblasts
18.	Natural killer T (NKT) cells
19.	Smooth muscle cells of the liver
20.	Schwann cells
21.	Binucleate cells
22.	Balloon cells
23.	Oval cells
24.	Fenestrated endothelium of Vascular sinusoids
25.	Lymphatic vessel cells
26.	Liver stem/progenitor cells (LSPCs)
27.	Multilineage-differentiating stress-enduring" (Muse) cells
28.	Gamma delta ($\gamma\delta$) T cells
29.	Polyploid cells
30.	Hepatic progenitor cells (HPCs)

31.	Specialized pericentral liver cells
32.	Hybrid periportal cells
33.	Hepatocytes-derived biliary-like cells
34.	Resident dendritic cells (DCs)
35.	Intrahepatic lymphocytes (IHL)
36.	Periportal liver macrophages
37.	Perivenous cells
38.	Periportal stellate cells
39.	Hepatic macrophages
40.	T-cells with conventional levels of T-cell receptor ($\alpha\beta$ T cells) expressing either CD4 or CD8 molecules
41.	Hepatic T lymphocytes (CD3+ cells)
42.	NK1.1+ T-cell receptor-alpha/beta+ cells
43.	Small population of c-Kit+ cells (stem cells) lacking lineage markers
44.	B lymphocytes
45.	Monocytes

46.	Extrahepatic cells
47.	Hepatic vascular endothelium
48.	Nerve endings (portal-hepatic sensory nerves)
49.	Mast cells
50.	Platelets
51.	Blood mononuclear cells
52.	Marginating-hepatic leukocytes
53.	Cell-specific expression of distinct insulin-like growth factor 1 and insulin-like growth factor-binding protein 3
54.	Microfilaments embrace endothelial cells
55.	Bone marrow-derived fibrocytes present in the liver
56.	Antigen presenting cells in liver
57.	Fetal liver stem/progenitor cells
58.	Hybrid hepatocytes
59.	Eomes-low NK cells ("circulating NK cells")
60.	Eomes-high NK cells were not ("liver-resident NK cells")

61.	Colony-forming cells are present in the liver primordium
62.	Human fetal liver multipotent progenitor cell (hFLMPC)
63.	Bile duct cells in the liver
64.	Liposomal clodronate-induced macrophage
65.	Blood-borne bone marrow-derived HSCs in liver regeneration
66.	Adult bile duct-derived bipotent progenitor cells from human liver
67.	Bipotential liver cells
68.	Myeloid cells
69.	Interleukin-2-activated natural killer cells
70.	Blood endothelial cells present in the liver
71.	Liver-infiltrating pro-inflammatory macrophages
72.	Liver capsular macrophages
73.	Littoral cells of liver
74.	Liver CD103-negative dendritic cells
75.	Liver CD103-positive dendritic cells

Total: 75 cell types in liver

TARGETED PRECURSOR BRAIN STEM CELLS FOR AUTISM

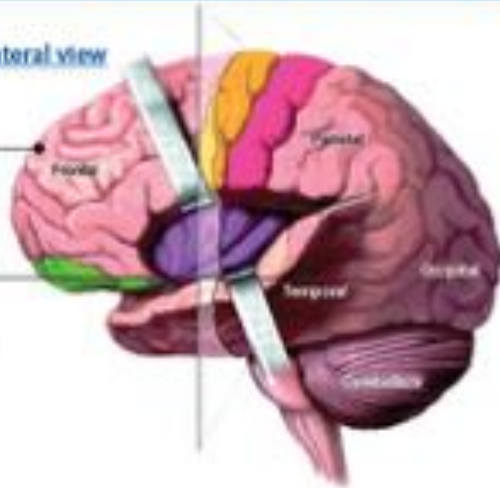
Lateral view

1 Frontal lobe

Associated with personality, behavior, emotions, cognitive, speech, speaking and writing, body motor, concentration and self-awareness

2 Temporal lobe

Recognition of auditory stimuli, auditory processing, memory, understanding language, sequencing and organization



Brainstem

3 Thalamus

Serves as a central relay station for almost all information that comes and goes to the cortex. It plays a role in pain sensation, attention, alertness and memory



Coronal view

4 Basal Ganglia

It works as an integrated brain system to help ensure physical movements are smooth and co-ordinated



5 Hypothalamus

Control center various specific functions, including controlling body temperature, feeding and drinking behavior, water balance, hormonal levels and sleep-wake cycles. Also a major coordinating centre of limbic system.

Midsagittal view

6 Cerebral Cortex

The thin greyish covering of each cerebral hemisphere. It involves in several functions including motor function, processing sensory information and behavioural reactions

7 Corpus Callosum

The thick band of nerve tissue that connects the left and right hemispheres of the brain and carries information between them

8 Amygdala

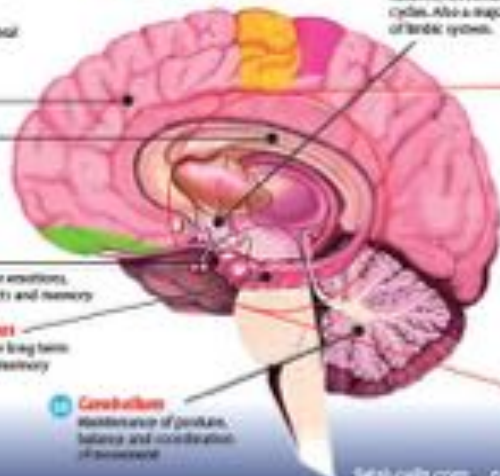
Responsible for emotions, survival instincts and memory

9 Hippocampus

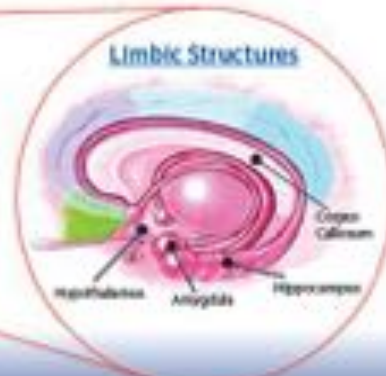
Responsible for long term or declarative memory

10 Cerebellum

Maintenance of posture, balance and coordination of movement



Limbic Structures



The Recommended Targeted Precursor Brain Stem Cells for Autistic Children

- 1 Frontal Lobe
- 2 Temporal Lobe
- 3 Thalamus
- 4 Basal Ganglia
- 5 Hypothalamus
- 6 Cerebral Cortex
- 7 Corpus Callosum
- 8 Amygdala
- 9 Hippocampus
- 10 Cerebellum

Setal-cells.com precursorstemcells.com

Questions You Should Always Ask!

- What type and How many of Stem Cells?
- How potent are they?
- How do you know if there are really Stem Cells?

LAB REPORT a **MUST have** detailing **cell count**,
viability count, **donor details** as they may be just
Cells (not Stemcells) or Not even Cells but Peptides
,Exosomes, Amniotic/Placenta fluid or Non Cellular
Products but you pay a high price for a Stemcell Therapy

How we can trace the cells & type & potency of stem cells or cells



Pancreas

FCTI

www.fetal-cells.com

Mitotracker stain

10x

1.6x magnification

Characteristics: Adherent, elongated

100 μ m

2006 to 2018 FCTI Stem Cells Retrograde Safety Study

- 2006 – 2018, approximately 300 Down syndrome patients.
- These patients were 932 vials (Organ specific).
- Some of the patients took 1 session and some took 6 session over period of 2 years.
- The minimum number of vials in each session is 1 to the maximum is 9 vials.
- 2 cases only were reported to have mild skin rash next day after injection which later disappeared without any anti-histamine.
- All Others did not report any side effects. The allergic reaction appeared in the first 4 hours, which is Type I hypersensitivity reaction.
- The survey of the patients followed up since 2006 till 2018 and no case of any type of hypersensitivity (latent – Type IV) was reported.
- No other symptoms were reported neither from the patients not the parents.

SAFETY MEASURES you need to look for :

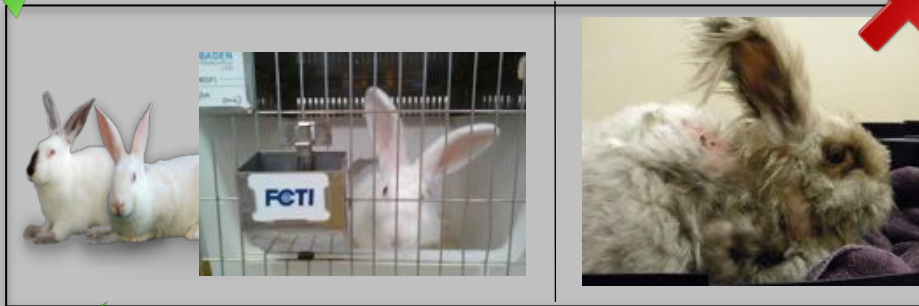
1. Source Of The Animals / Human Materials

OURS

FDA Certified Closed Colony & SPF

Street Animal

RABBIT



OURS

SHEEP



Specific-Pathogen-Free (SPF)














is a term used for “**medical laboratory animals** that are guaranteed free of all particular pathogens”

To certify SPF, the population is checked for presence of (antibodies against) ALL the specified pathogens required by FDA or EMEA guidelines.

2. Manufacturing Process / Lab / Plants



473 + 2 = 475 cell types

STEM CELLS	6 PSC 	60  	5 ml	1 vial
LIVE CELLS	5 FOC (FFC) 	1 	5 ml	6-8 vials
Nanomised Targeted Organ Specific CELL EXTRACTS . PEPTIDES	4½ FOE (FFE,FFP) 	1 	2.5 ml	20-30 vials
	4¼ MO 	1  	2.5 ml	30-40 vials
	4 NOP (NanoCell Extracts) 	1 	2.5 ml	60-80 vials
AMINO ACIDS EXTRACT	2 Others (Pooled Extracts) 	?	6500 to 8500 vials	



3. PHARMACEUTICALS STORAGE

4. LOGISTICS TRANSPORTATION AND HANDLING



Special Handling (Ours)



Normal Handling (Others)



5. Credential 1

GMP COMPLIANCE CERTIFICATES



Asia Pacific International Entrepreneur Excellence Award 2011

International Geneva Inventions Award 2012

International Invention Fair of the Middle East Kuwait 2012

International Star for Leadership in Quality Paris

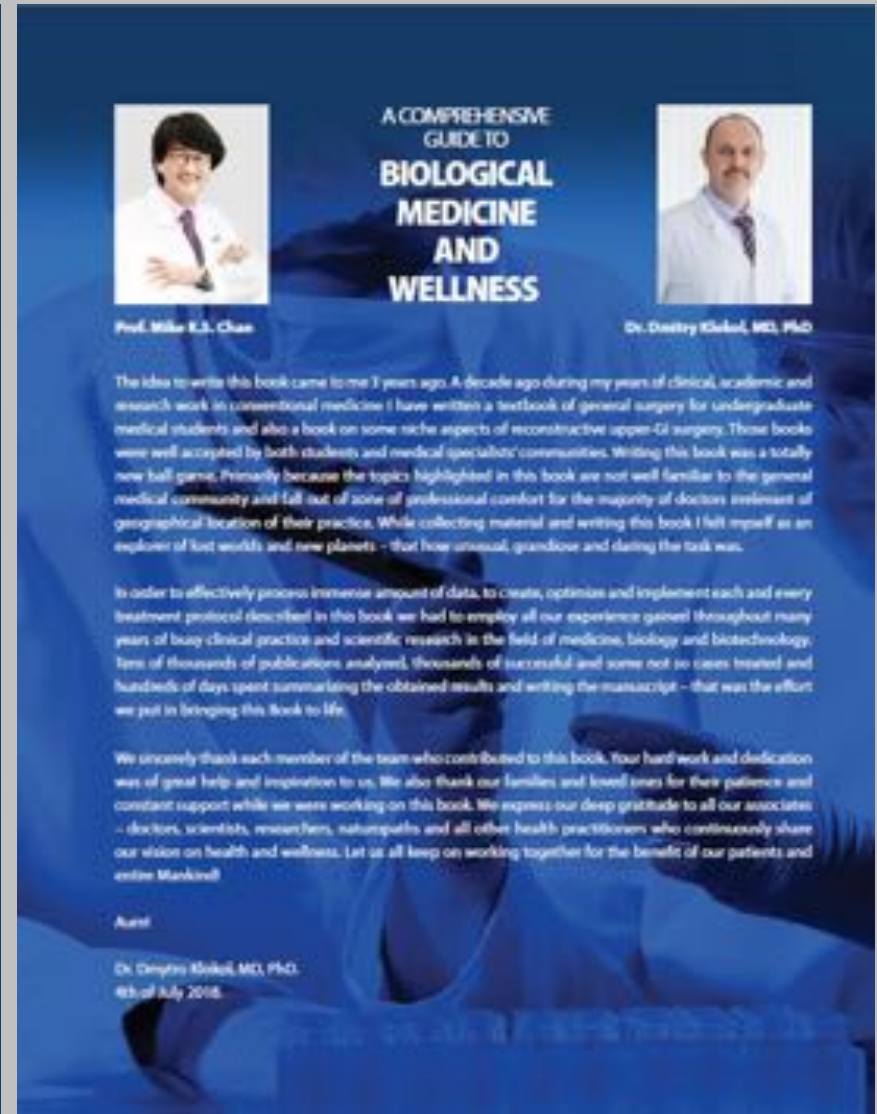
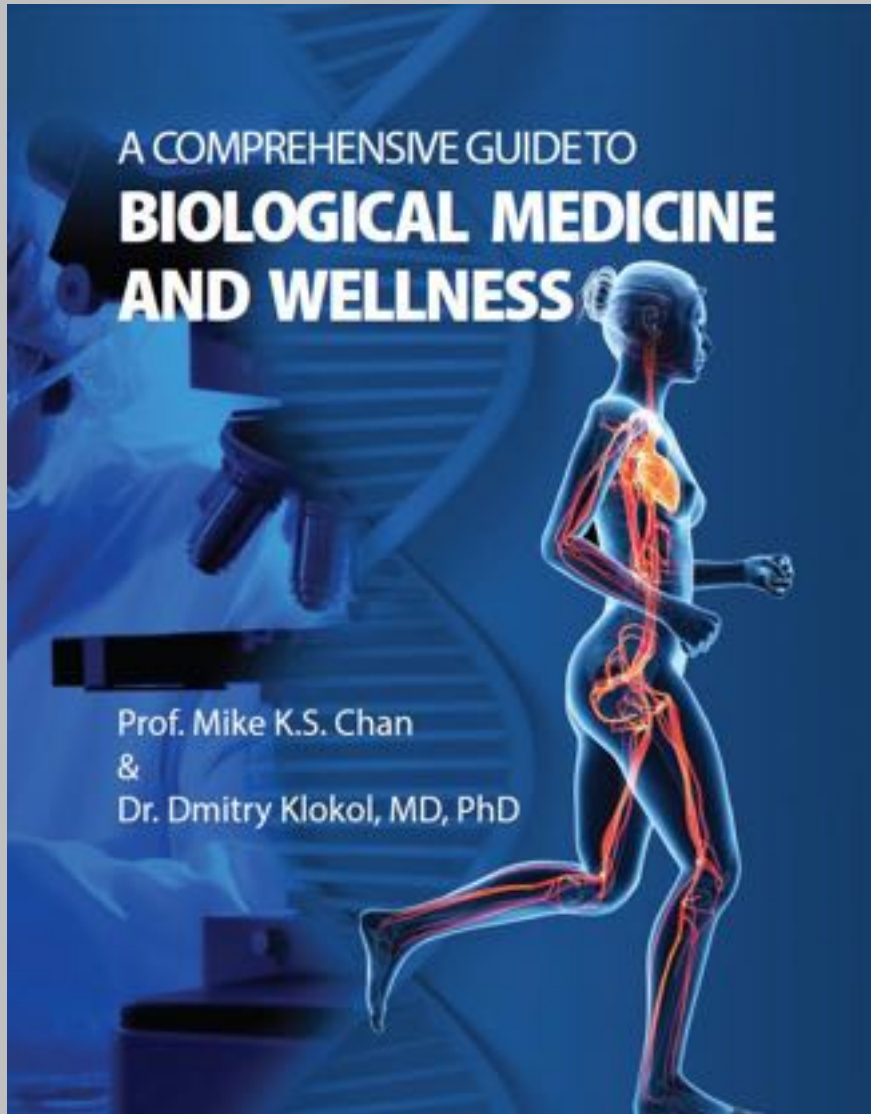
FREE SALE CERTIFICATE ATTESTATION – COSMETICS



Asia Pacific Top CEO Award 2011

From UK 2019, **NEW !!!**

ISBN 978 1789015 249





Prof. Mike K.S. Chan

STEM CELL THERAPY IN REGENERATIVE MEDICINE

The Medicine of
the Future Today



Dr. Dmitry Klokol, MD, PhD

Lorem ipsum dolor sit amet, consectetur adipiscing elit, sed do eiusmod tempor incididunt ut labore et dolore magna aliqua. Semper auctor neque vitae tempus quam pellentesque nec nam aliquam. Rhoncus dolor purus non enim praesent elementum facilis. Utra cursus eget nunc scelerisque viverra mauris. Odio aenean sed adipiscing diam donec. Adipiscing elit pellentesque habitant morbi tristique senectus et netus. Sed elementum tempus egestas sed sed risus pretium quam. Dictumst vestibulum rhoncus est pellentesque. Neque aliquam vestibulum morbi blandit cursus. Bibendum est ultricies integer quis auctor elit sed vulputate. Tristique senectus et netus et malesuada fames. Diam pharetra vestibulum lorem sed.

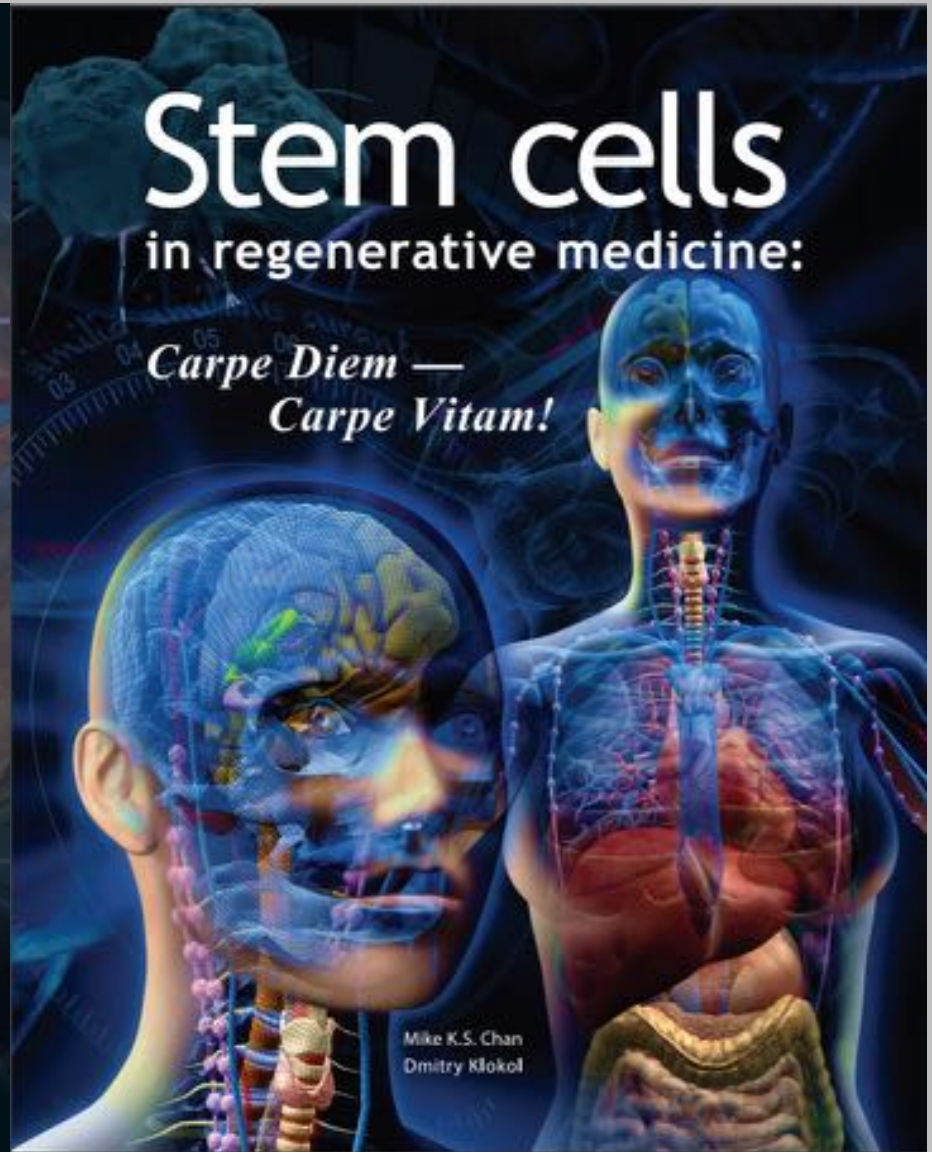
Uma et pharetra pharetra massa massa ultricies. Potenti nullam ac tortor vitae purus faucibus ornare suspendisse. Teflus mauris a diam maecenas sed. Sed viverra ipsum nunc aliquet bibendum enim. Eget felis eget nunc lobortis mattis aliquam faucibus. Sed arcu non odio euismod lacinia at quis risus. Vitae suscipit tellus mauris a. Sagittis vitae et leo duis ut diam quam. Dolor sit amet consectetur adipiscing elit pellentesque. Auctor eu augue ut lectus arcu bibendum at. Varius vel pharetra vel turpis nunc eget. Faucibus scelerisque eleifend donec pretium vulputate sapien nec.

Eu ultricies vitae auctor eu augue. Praesent elementum facilis leo vel fringilla est ullamcorper eget. Est velit egestas dui id ornare arcu odio ut. A condimentum vitae sapien pellentesque habitant morbi tristique senectus. Mattis ullamcorper velit sed ullamcorper morbi tincidunt ornare. Ligula ullamcorper malesuada proin libero nunc consequat interdum varius. Lacus laoreet non curabitur gravida arcu. Quis commodo odio aenean sed adipiscing diam donec adipiscing tristique. Quisque sagittis purus sit amet. Mauris ultrices eros in cursus turpis massa tincidunt dui. Donec adipiscing tristique risus nec feugiat in. Et malesuada fames ac turpis egestas integer eget aliquet. Gravida in fermentum et sollicitudin. Interdum posuere lorem ipsum dolor sit amet. Aliquam faucibus purus in massa tempor nec feugiat. Dui nunc Mattis enim ut. Feugiat in ante metus dictum at tempor commodo ullamcorper a. Amet consectetur adipiscing elit ut aliquam purus sit.

Dr. Dmitry Klokol, MD, PhD

Stem cells in regenerative medicine:

*Carpe Diem —
Carpe Vitam!*

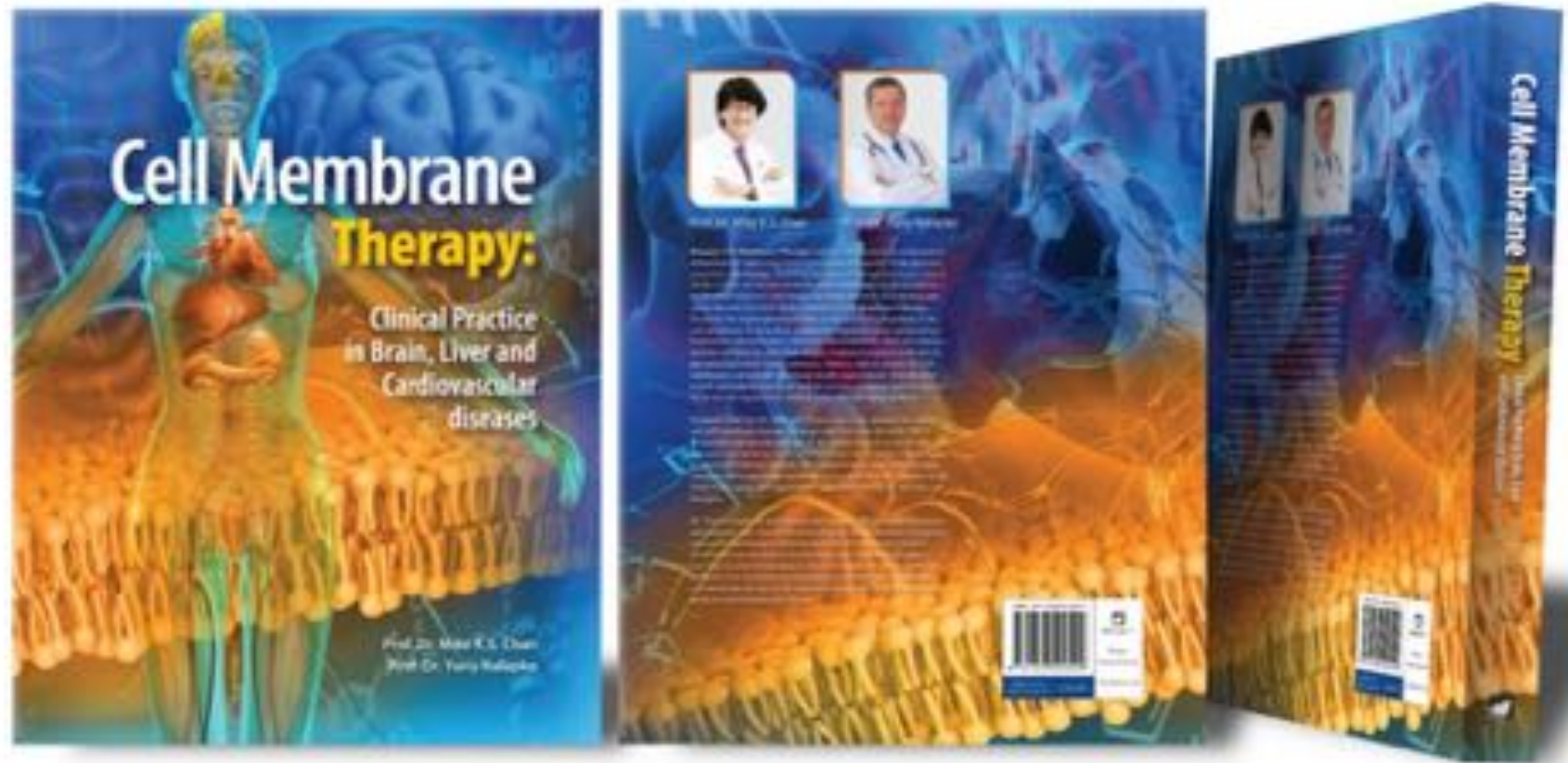


Mike K.S. Chan
Dmitry Klokol

From UK August 2019

ISBN: 978-1-83859-250-9

English - Published in UK



PUBLICATIONS – JOURNALS



Basic Research Journal
Available online: <http://www.boffinaccess.com>
Copyright ©2016, Boffin

Full Length

Effic

Full Length Re

Mike Ch

Effic
supplem

Mike Chan, M

Stellar Biom

In spite of
considers
absence of
dialysis
therapy is
parameter
seam cell
CKD stag
CKD stag
renal proc
further de

Key word

Placenta consu
also is accepi
milk producti
anti-aging effe
placenta. In th
following para
radiance, rega
surface sebun

Keywords: plac

INTRODUCTI

Chronic kidn
progressive di
functioning in
hypertension,
infections of u
etc. In spite
medical scien
gradually win
end-stage ren
dooms patien
transplant. Ho
rate, high co
operative ma
Bello, 2006).
Such situat
therapeutic in
function or
progression of
shown that it

INTRODUCTION

In all times and out
ways of rejuvenate
products based on it
the inner power and
stamina and fitness.
Kingdom placenta
encountered after
placentophagy is also
of the means to incre
production, balance
postpartum depress
effect, etc (Coyne et al
Cosmetic industry it
products based on at



Journal
Immunology

Full Paper

Management of M
Thymus Peptides:

Sheng Yi Pei^{1*}, Mike Chan²
1: Stellar Biomaterials Research, Gene
2: Corresponding author: Dr. Yi Pei
Received date: July 11, 2016; Accepted
date: August 8, 2016; Issue 2, Vol. 11
Copyright © 2016, Boffin Access
All rights reserved. This article is distributed under the terms of the Creative Commons Attribution License (CC BY), which permits unrestricted use, distribution, and reproduction in any medium, provided the original author and source are credited.

Abstract

In the recent 2
of thymus-derived
milk products
treatment model
of thymus cell
suggests that its
form of action is

Keywords: Colocal
immunotherapy, thymus cell

Introduction

Last in the most extensive
secondaries to liver are those of
of primary biliary cirrhosis (PBC)
remains. Liver nodules have
performed by means of some
has become a global medical
treatment. MEDLINE database has 3-
cancer is 10-12%. In case of a
single-stage surgical removal of
nodules, patients with metastatic
+12 months. In spite of early
survival rate is only 9-12% [1].

In recent years immunotherapy
advanced form of cancer due to
ability compared to currently
existing effects of therapy de
various forms of cancer. Thymus
regulate its functional activity
matured functional T-cells enter
adaptive immune system response

Apart from T cells, macrophage
immunity. Macrophage protein
TNF (tumor necrosis factor) is a
cytokine, which originates in
the tumor site, and induces a
tumor-incompetent cells. It is
discussed the role of Gc protein
(GcMAP) in increasing phagocytic
antitumor effects and antitumor

1: Stellar Biomaterials, an open access
journal

Journal of M

Review Ar

Placenta
therapeu

Sheng Yi Pei^{1*}, Mike
Chan²
1: Stellar Biomaterials R
2: Stellar Cell Technolog

Abstract

The placenta, supplying
biological active compo
placental therapy was
described, and influence
in vitro. This review fo

Introduction

The placenta is a
it is only developed w
arteries and the ve
and the fetus, thus i
linea [1]. The word p
meaning "flat cake"
the nutrient and im
source respectively.

During pregnan
growth, nutrients, res
components of the fo
placenta, which secures
pregnancy, particularly
the placenta serves a
active component i
polydeoxyribonucle
factors with significa
wound healing activi

The structure of t
components of the
allows with contribu
the attachment of the
side of the placenta.
These points of attac
the transfer and re
normal [1,2].

In humans, the
disc shape and with
blood stream. The
chorionic plate, whic
is divided into two co
of the inner cytotroph
reduction in the cy

REVIEW ARTICLE

European We
Evidenced Ro
the Biological
Ad Astra Per

ABSTRACT

Modern scientific evidence
with being in the patients. This
is increased blood. It has been
analysis in the latest studies
a form of Biological Wellness - a g
Biological Wellness.

Keywords: wellness, biological
biological wellness, biological

INTRODUCTION

The World we live in, today, is
history always repeats itself an
renewed risk. Within a century,
complex nature of diseases,
treatments emerge and recede,
are renewed and renewed, like
the previously existing one,
role in improvement. There is a
and increasing more complex
the view that the medical pro
the level of healthcare man
step details of the disease's
level organism as a whole. The
parameters of our health, and it
was born.

Current trends in alternative
use and its predicaments

With the rise of chronic, age-
related and infectious, the society
has many physical symptoms -
body. The society tries to maintain
state of the disease or even to
the end of the treatment of
struggle for the patient. Whate
from the point of view of med
for the patient, which has, often

Such circumstances have
namely to conventional med
diseases with conventional
treatments with one str
better". Isn't it what "wellness
improve the quality of life, the
well? Unfortunately, some of
modern's predicaments.

August 8, 2016

Received Date: 10 Dec

Boffin Access

Drug Design Development and Delivery Journal

Open Access Journal | Volume 1.3

ISSN 2631-3278

Efficacy of Botanical Derived MFI VP Evolution Softgels for the Maintenance of Cardiovascular, Liver and Kidney Health

Sheng Yi Pei^{1*}
Stellar CellTech
Destiny Khatib¹
Mike Chan²
Michelle M Young¹
Shaheryar Choudhury¹

¹Stellar Biomaterials Research & Innovation GmbH, Biedenkopf/Georgen-Förster, Germany, Switzerland
²EM European Wellness Academy GmbH, Klosterstraße, Adelboden, Germany

Abstract

Free radicals are produced from the external environment (pollution, cigarette smoke, radiation, pesticides and industrial solvents) and are also generated as by-products by our body systems. As we age, free radicals gradually accumulate and become over-represented, generating a phenomenon known as oxidative stress. Although our bodies can endogenously produce antioxidants to counter free radicals, their efficiency diminishes as we age. Accumulation of free radicals eventually leads to cellular damage and development of various diseases including cardiovascular disease, liver disease and kidney disease. It has been known the consumption of nutritional supplements rich in antioxidants and vitamins play a significant role in the protection from free radical damage and the treatment of diseases. Currently, anti-aging programs have been an increasingly debated topic to delay the fundamental biological aging process and to increase longevity to prevent disorders or age-related diseases and to improve the quality of life. The present article reports the consumption of MFI VP Evolution for 1 month, resulting in better health conditions as reflected by laboratory blood test results. In conclusion, the intake of MFI VP Evolution could serve as a promising alternative in the management of cardiovascular, liver and kidney health.

Keywords

Botanical derived extracts, Anti-aging, Low density lipoproteins, Estimated glomerular filtration rate, Gamma-glutamyl transferase

Introduction

Free radicals gradually accumulate and become over-represented as we age, generating a phenomenon known as oxidative stress [1]. Free radicals and reactive oxygen species (ROS) are derived from alcohol, drugs, industrial chemicals as well as air pollutants [2]. Oxidative stress eventually leads to cellular damage and development of various diseases including cardiovascular disease (CVD), liver disease and kidney disease. According to the World Health Organization (WHO), CVD accounts for 30% of the estimated 58 million deaths globally from all causes in 2005 [3]. Although there are many clinical risk factors of CVD, renal and liver dysfunction has begun to attract considerable attention in recent years as the emerging independent risk of CVD. In 2003, the American Heart Association released a statement highlighting kidney disease as a risk factor in the development of CVD [4]. Several studies revealed that even the earliest stages of chronic kidney disease have the potential to heighten the risk of subsequent coronary heart disease [5]. Accumulating evidence is also beginning to associate non-alcoholic fatty liver disease (NAFLD) with rising incidence of CVD independent of other traditional risk factors. Some researchers believed that NAFLD might play an early role in the development and progression of atherosclerosis [6]. Although NAFLD is prevalent in the Western population, the association between NAFLD and CVD has also been observed in other populations including Chinese [7] and African-Americans [8]. Furthermore, there has been emerging evidence suggesting that there is a bidirectional relationship between fatty liver and CVD [6]. The increasing prevalence of cardiovascular, liver and kidney disease opened up the necessity to search for preventive measures. Thus the aim of this study was to investigate the efficacy of botanical extracts for the management of health and wellbeing.

Case

A 34-year-old female patient presented herself with a complaint of dizziness in March 2016. A complete blood count including lipid studies, liver and renal function tests were performed to evaluate the health condition of the patient. Blood test results reveal several issues of concern, namely elevated platelets, total protein and globulin as well as reduced eGFR. In addition, LDL and HDL were also slightly elevated albeit still under acceptable range. Based on the patient's blood test results, a 3-month supply of MFI VP Evolution

Drug Des Dev Effic J

Volume 1.3

Shouldn't physicians be more open minded, when there is no solution with conventional medicine???



At 1 1/2 years of age



At 10 years of age



9 1/2 years old



10 1/2 years old

DISCLAIMER:

EW group, EW Academy. Stellar Biomolecular Germany, FCTI Precursor Stemcells has taken strict measures to safeguard the reliability of the information contained herein. Neither EWC, FCTI nor its partners can provide any assurance or warranty, including to third parties. In relation to the accuracy, reliability or completeness of the presented information.

All information contained in this presentation is intended to informational and educational purposes. The information is not intended nor suited to be a substitute for professional medical treatment or for professional medical advice.



EW VM Bangkok branch

For more information, kindly contact

THANK YOU

Prof. Dato Sri Dr Mike Chan Whatsapp: [+60138663333](https://wa.me/+60138663333)

Email : mtks3333@gmail.com

info@fctiinc.com

or

info@european-wellness.com